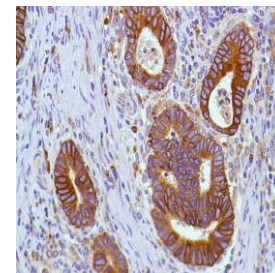




Rabbit Anti-Human COX-2 Monoclonal Antibody (Clone SP21)

CATALOG #:

- M3210** 0.1 ml rabbit monoclonal antibody supplied as tissue culture supernatant in TBS/1% BSA buffer pH 7.5 with less than 0.1% sodium azide.
- M3212** 0.5 ml rabbit monoclonal antibody supplied as tissue culture supernatant in TBS/1% BSA buffer pH 7.5 with less than 0.1% sodium azide.
- M3214** 1.0 ml rabbit monoclonal antibody supplied as tissue culture supernatant in TBS/1% BSA buffer pH 7.5 with less than 0.1% sodium azide.
- M3211** 7.0 ml pre-diluted rabbit monoclonal antibody supplied as tissue culture supernatant in TBS/1% BSA buffer pH 7.6 with less than 0.1% sodium azide.



Human colon adenocarcinoma stained with anti-COX-2 antibody

INTENDED USE:

For Research Use Only. Not for use in diagnostic procedures.

CLONE:

SP21

IMMUNOGEN:

Synthetic peptide derived from C-terminus of rat COX-2.

IG ISOTYPE:

Rabbit IgG

EPITOPE:

Not determined

MOLECULAR WEIGHT

70kDa

SPECIES REACTIVITY:

Human (tested). (See www.springbio.com for information on species reactivity predicted by sequence homology.)

DESCRIPTION:

COX2 (Cyclooxygenase-2) is an inducible enzyme. It is involved in the response of cells to growth factors, tumor promoters, and cytokines that induce its expression. Given its role in synthesizing prostaglandins, COX2 is therefore of interest in studying immune response regulation. COX2 is induced by a wide variety of stimuli and was initially identified as immediate-early growth response gene. In addition, COX2 expression markedly increased in 85-90% of human colorectal adenocarcinoma whereas COX1 levels remain unchanged.

APPLICATIONS:

Immunohistochemistry (IHC)

IHC PROCEDURE:

Specimen Preparation: Formalin-fixed, paraffin-embedded tissues are suitable for use with this primary antibody.

Deparaffinization: Deparaffinize slides using xylene or xylene alternative and graded alcohols.

Antibody Dilution: If using the concentrate format of this product, dilute the antibody 1:100. The dilutions are estimates; actual results may differ because of variability in methods and protocols.

Antigen Retrieval: Boil tissue section in 10mM citrate buffer, pH 6.0 for 10 min followed by cooling at room temperature for 20 min.

Primary Antibody Incubation: Incubate for 30 minutes at room temperature.

Slide Washing: Slides must be washed in between steps. Rinse slides with PBS/0.05% Tween.

Visualization: Detect the antibody as instructed by the instructions provided with the visualization system.

POSITIVE CONTROL:

Colon adenocarcinoma, lung, breast carcinoma

CELLULAR LOCALIZATION:

Cytoplasm

STORAGE & STABILITY

Store at 2-8°C. Do not freeze. The user must validate any other storage conditions. When properly stored, the reagent is stable to the date indicated on the label. Do not use the reagent beyond the expiration date.

There are no definitive signs to indicate instability of this product; therefore, positive and negative controls should be tested simultaneously with unknown specimens.

If unexpected results are observed which cannot be explained by variations in laboratory procedures and a problem with the reagent is suspected, contact Technical Support at spring.tech@ventana.roche.com.

WARNINGS & PRECAUTIONS:

1. Avoid contact of reagents with eyes and mucous membranes. If reagents come into contact with sensitive areas, wash with copious amounts of water.
2. This product is harmful if swallowed.
3. Consult local or state authorities with regard to recommended method of disposal.
4. Avoid microbial contamination of reagents.